

ConnectedLives

A model for Hertfordshire

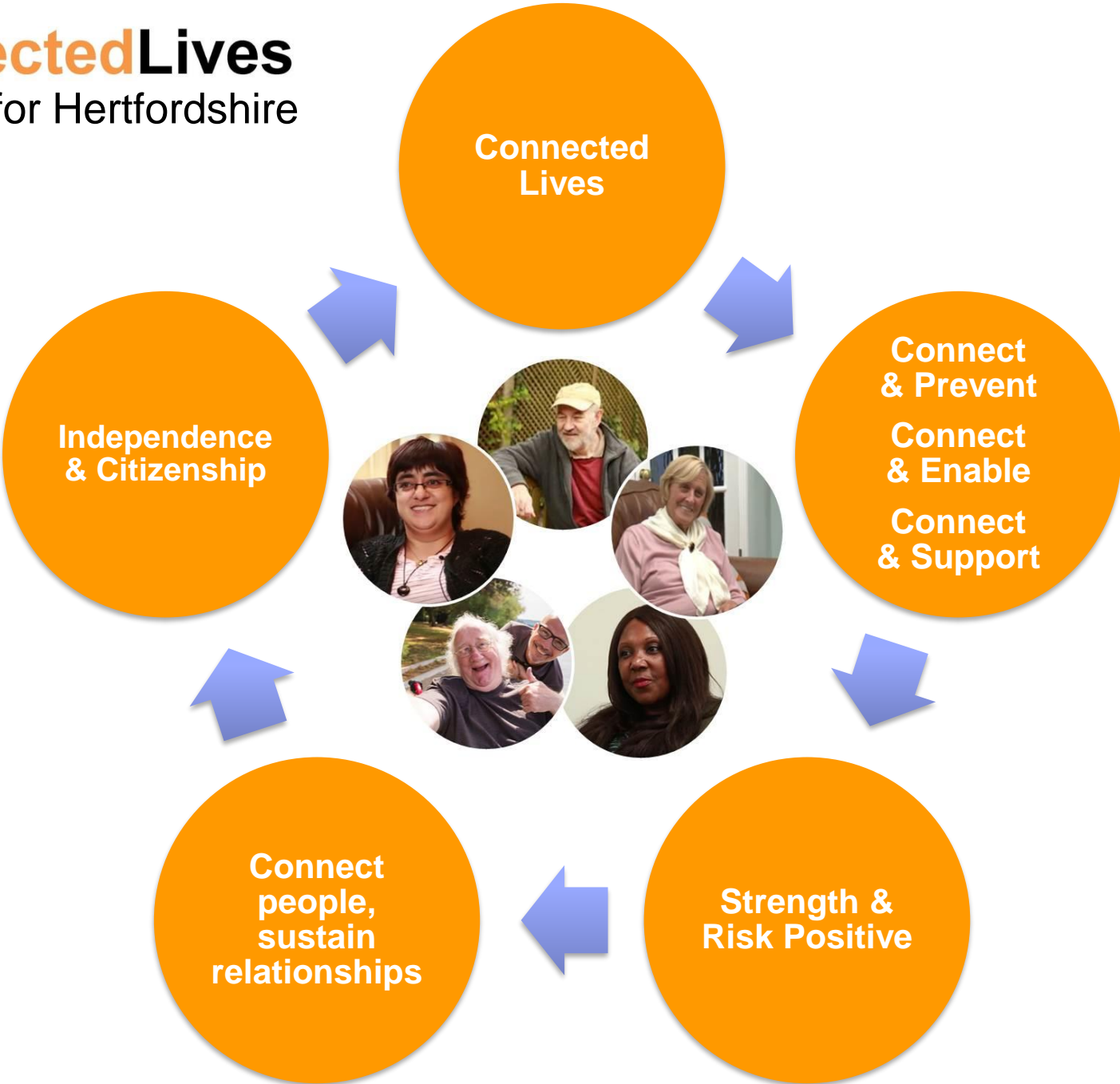
www.hertfordshire.gov.uk

ConnectedLives



ConnectedLives

A model for Hertfordshire



A model for everyone in social care



- **ConnectedLives** principles will run through everything we do:
- Front line social care work with people and in assessments and reviews
- Commissioning and buying services
- Contract monitoring with providers

**Connected
Lives**

- Connecting people to people, services, technology, networks, communities, aspiration and real lives

**Strength &
Risk Positive**

- Help people manage their own lives
- Reignite the strength in people so they can be more independent
- Taking risks is something we all do to make life better and achieve goals, this must happen in care too

Connect
people,
sustain
relationships

- It's not just about connecting people to others nearby
- Look wider than your own care services

Independence
& Citizenship

- Enable citizenship – beyond just good care
- Independence doesn't just mean not having a service - a service may give people independence
- Cater for fluctuating needs and care should be stepped up and down

What will make this happen?

- Services, care and pathways that **prevent** needs from escalating
- **enable** people to live independent lives
- **support** people with great care to achieve outcomes and citizenship
- Co-production and community consultation
- Training and support providers